



# Sandblaster SLS

DUST-FREE

---



## DEDICATED DEVICE FOR POST-PROCESSING 3D PRINTED ELEMENTS



Sandblaster uses compressed air and little glass beads particles to clean the SLS prints of powder residues, highlights every detail, polishes the print surface, and enables better operation of moving parts in a completely clean and safe way.



# What distinguishes our Sandblaster SLS?

---

Easy and clean post-processing

# SANDBLASTER **SLS**

## DEDICATED TO SLS SOLUTION

### MAIN BENEFITS & FEATURES:

#### CLEAN OUTSIDE

**HEPA filtration** and fully sealed construction

#### CLEAN INSIDE

**Powder Extraction System**, compatibility with ATEX Vacuum Cleaner, underpressure environment

#### PRECISE POST-PROCESSING

Adjustable air pressure, **two sandblasting nozzles**, a low-mesh grill

#### CLEAN EVEN THE BIGGEST PRINTS

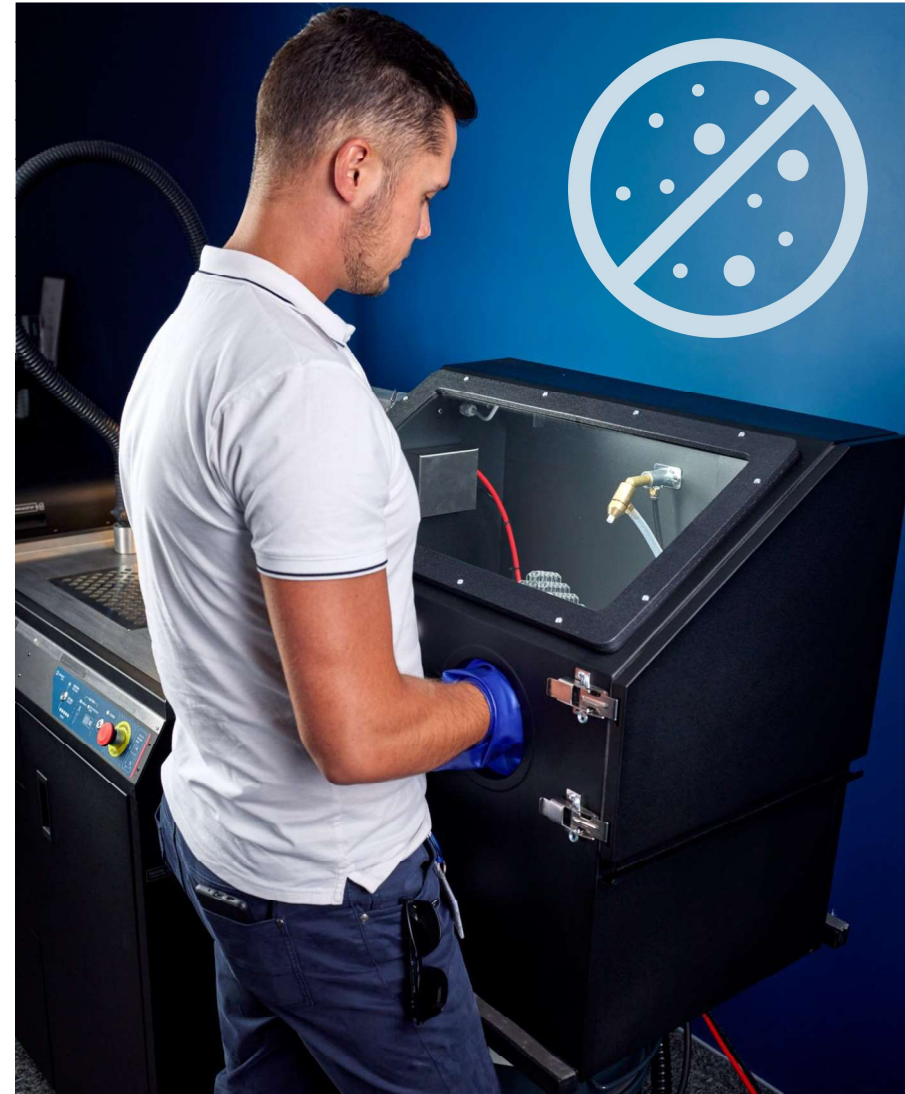
**Spacious** Workspace

#### LOWER LEVEL OF ABRASIVE CONSUMPTION -

Increasing the **efficiency of the material**

# CLEAN OUTSIDE

**HEPA filtration** and **full sealing**, ensure a dustless environment around the Sandblaster SLS and allow you to post-process while having no contact with the powder.





## CLEANER INSIDE

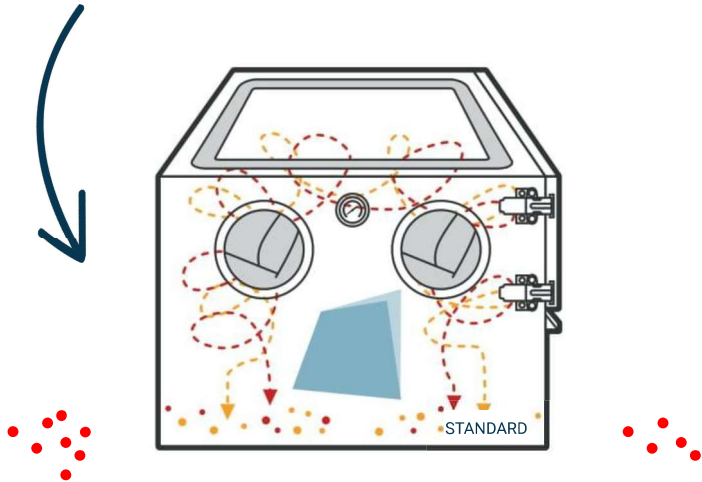
Less floating powder inside chamber thanks to **Powder Extraction System.**

Sandblaster SLS is compatible with the **ATEX Vacuum Cleaner.** Our unique system, using a special **vacuum environment** separates abrasive and powder, and removes powder from the chamber.

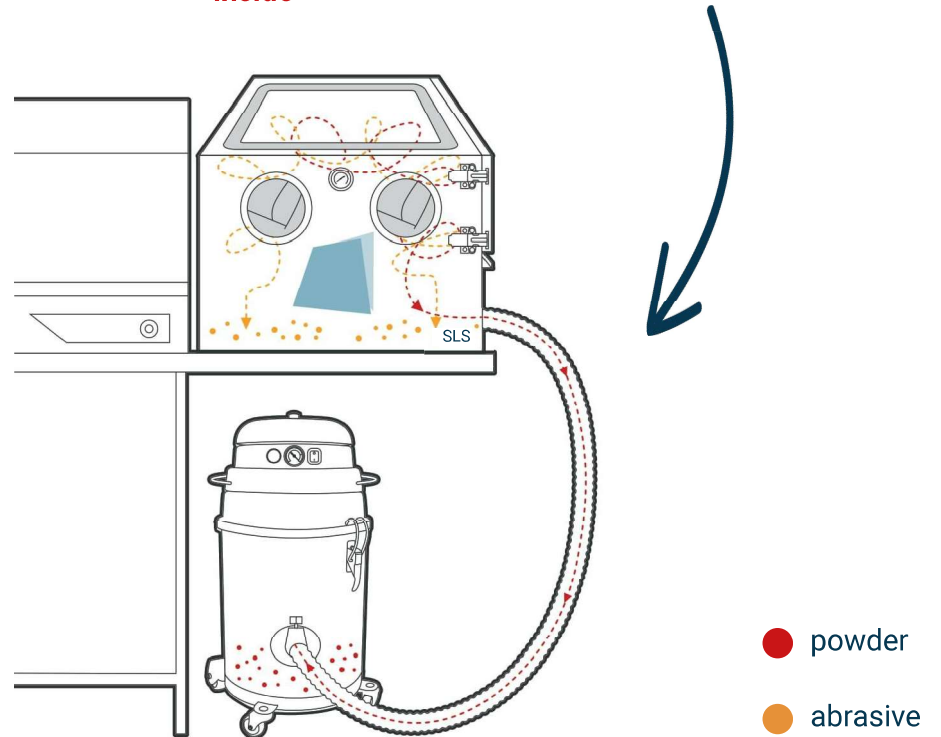
# HOW DOES IT WORK?

## Powder Extraction System

In the classic sandblasters, after use, the powder settles on the bottom together with the abrasive, resulting in low visibility and rapid consumption of the latter.



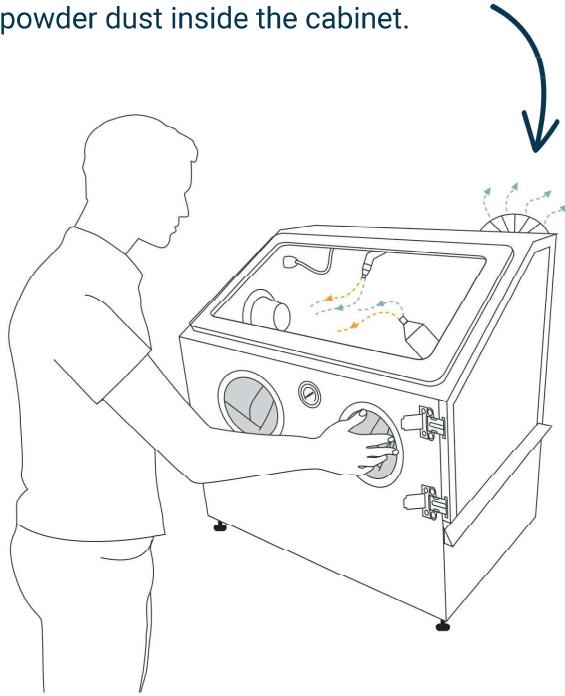
In the Sandblaster SLS ATEX / Intertek Vacuum makes a pressure separating the dust from the abrasive and **removes all powder from the inside**



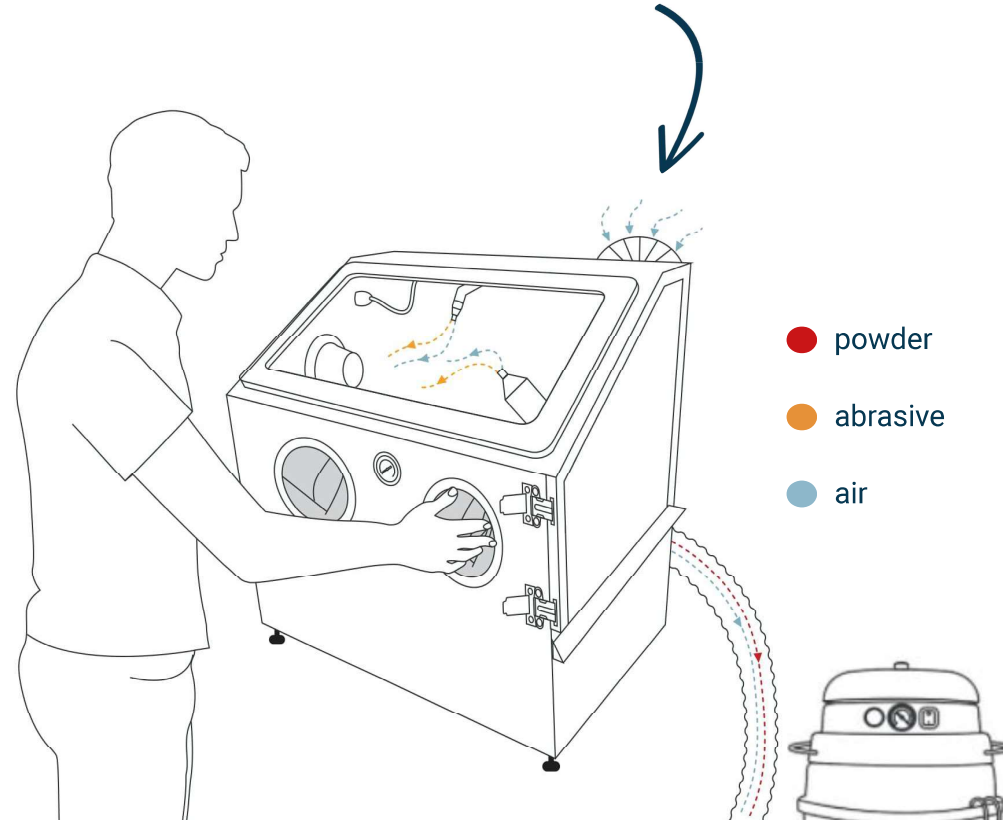
# HOW DOES IT WORK?

## HEPA filtration

Without Vacuum - HEPA filtration system filters the air and at the same time keeps all powder dust inside the cabinet.



As the underpressure is generated in the chamber, the filter **supplies air** and the powder is removed from the Sandblaster SLS with a Vacuum Cleaner.



- powder
- abrasive
- air



# PRECISE POST-PROCESSING

## - Adjustable air pressure

Smooth regulation allows for thorough cleaning of even the smallest and most delicate prints.

## - Two sandblasting nozzles and external air blow gun

An additional manual blasting gun ensures precision, wall-mounted blasting nozzle makes it possible to freely rotate objects and the external air blow gun allows air-blasting outside of the chamber.

## - A small grid

A low-mesh grill allows work with a series of prints preventing small parts from getting inside the device.



# CLEAN EVEN THE BIGGEST PRINTS

**Large working area**

**675 x 450 x 415 [mm]**

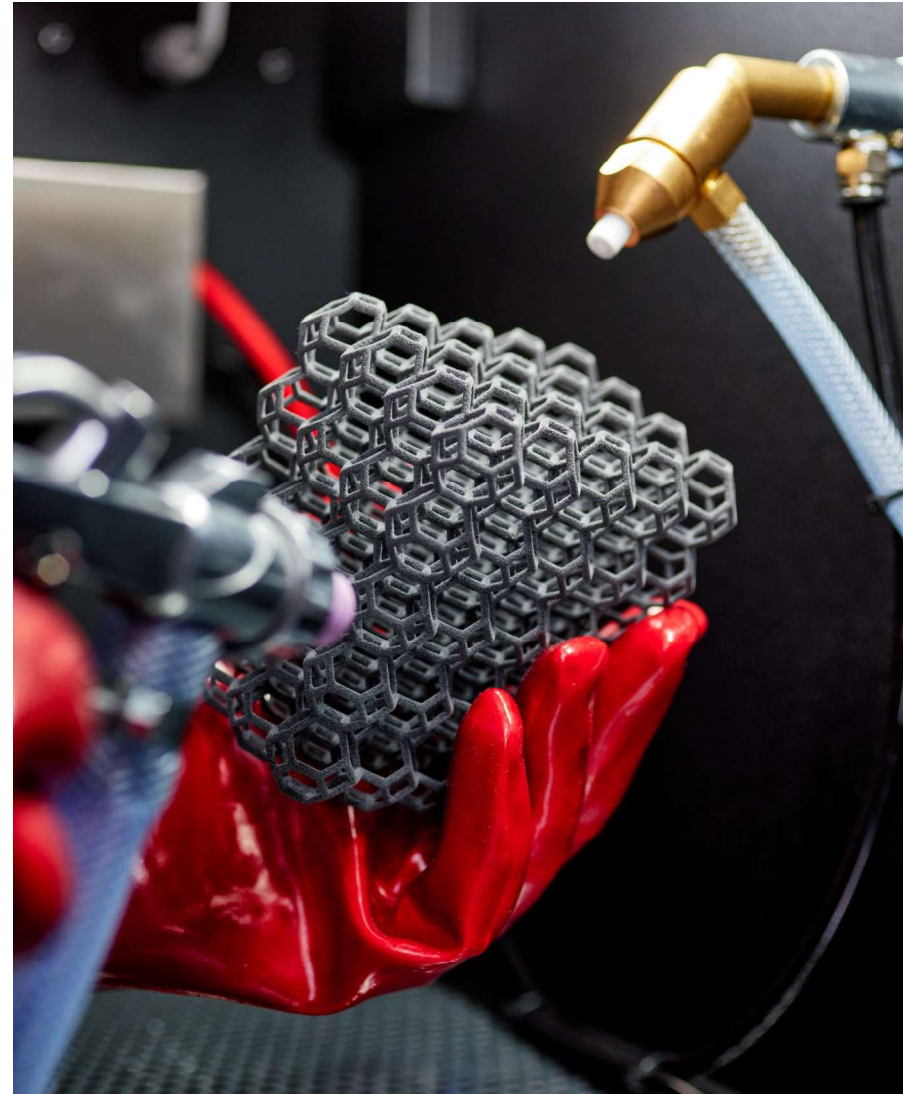
The industrial cabinet improves the comfort of working on large prints and allows them to be conveniently rotated.





## LOWER LEVEL OF ABRASIVE CONSUMPTION

Thanks to the fact that the Vacuum Cleaner removes the powder from the inside of the chamber, the **abrasive is more efficient and the cost is lower than in a standard solution.**



# Specification

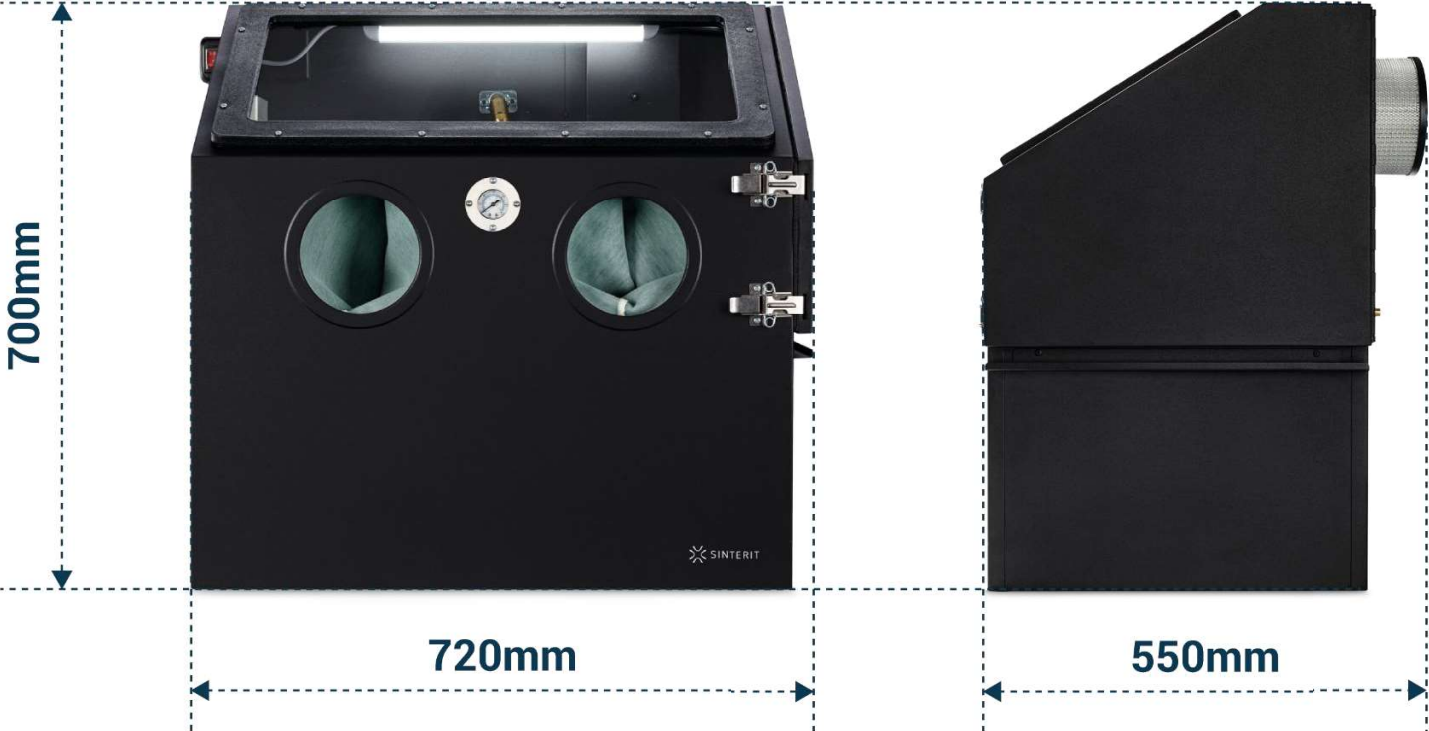
## Sinterit Sandblaster SLS



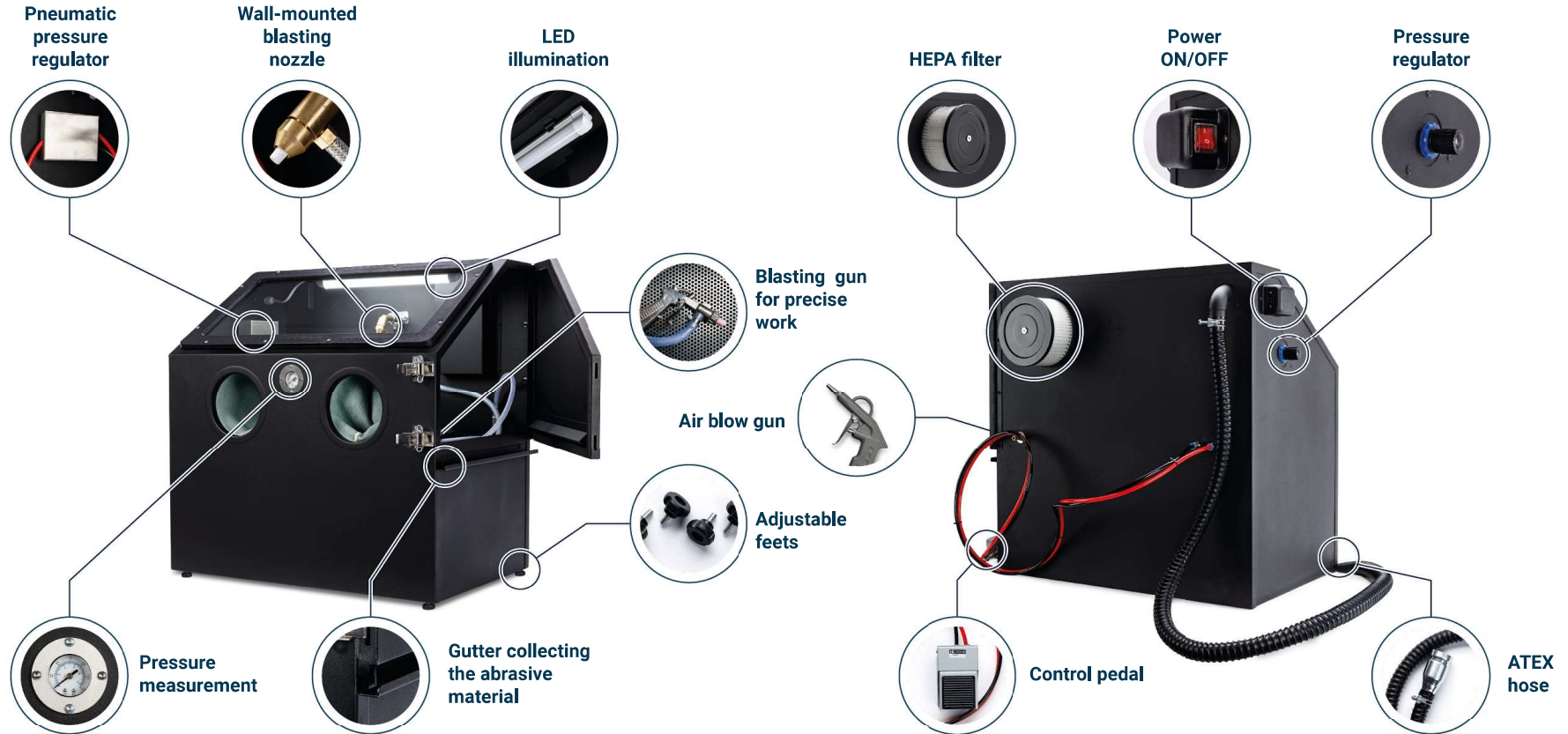
GENERAL	
Category	Cabinet Sandblaster
Type	Stationary, operated via a foot pedal
Warranty	One-year limited warranty
Dimensions	700 x 550 x 720 [mm] (27.6 x 21.7 x 28.3 [in])
Total weight	30.5 [kg] (67.1 [lbs])
TECHNICAL DATA	
Working Area	675 x 450 x 415 [mm] (26.6 x 17.7 x 16.3 [in])
Capacity of abrasive material	10 [kg] (22.0 [lbs])
Operating Voltage	110/230 [V] AC, 50/60 [Hz]
Maximum power consumption	8 [W]
Working pressure	5.0 – 8.6 [bar] / 72.5 - 125.0 [psi]
Min / Max flow	290 / 420 [l/min]
Filter type	HEPA
PACKAGING	
Size of package	790 x 545 x 765 [mm] (31.1 x 21.5 x 30.1 [in])
Package weight	45 [kg] (99.0 [lbs])
Package contains	Sandblaster, 8 [kg] (17.6 [lbs]) of abrasive material, User manual and accessories
SAFETY	
Certification	CE



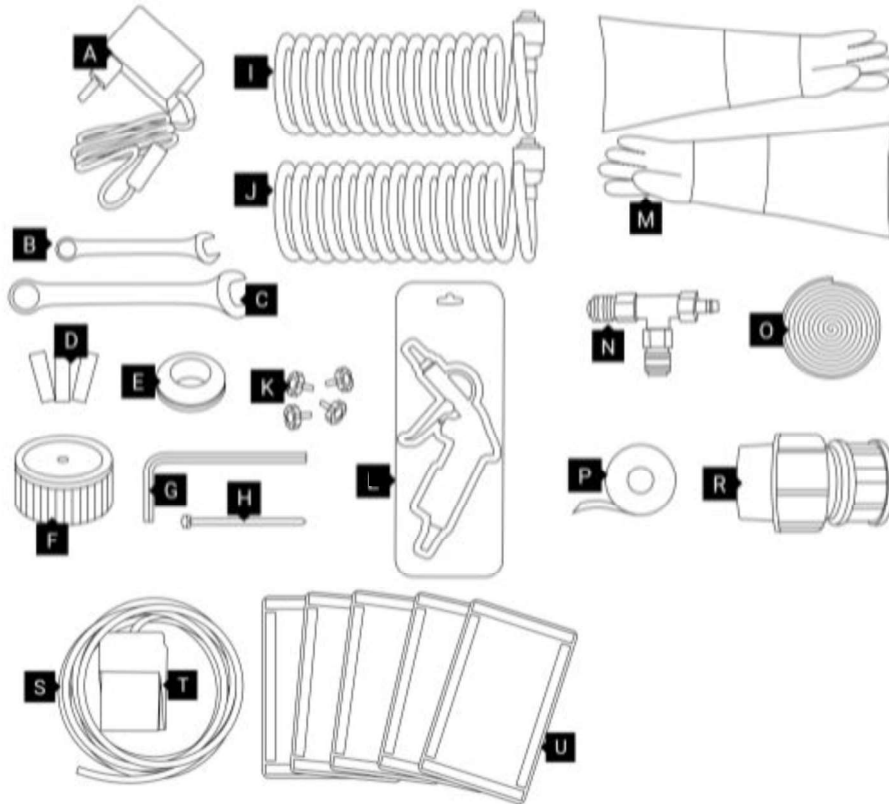
# SINTERIT SANDBLASTER SLS dimensions



# Sandblaster SLS - key elements



# The sandblaster accessories set contains



- A. Power supply (US/EU)
- B. Wrench 10 (mm)
- C. Wrench 14 (mm)
- D. Replaceable ceramic nozzles
- E. Rubber grommet
- F. Air filter
- G. Allen wrench
- H. Filter screw
- I. Air blow gun pneumatic tubing
- J. Compressor pneumatic tubing
- K. Adjustable mounting feet (4 pcs.)
- L. Air blow gun
- M. Spare protective rubber gloves for precise work
- N. T-type push-in pneumatic fitting
- O. PVC foam type
- P. PVC protective type
- Q. Pipe end cap
- R. Pneumatic nipple
- S. Control pedal's pneumatic tubings
- T. Control pedal
- U. Replaceable protective PE foil